



ARCHITECTURE
 INTERIOR ARCHITECTURE
 SPACE PLANNING
 FACILITIES MANAGEMENT
 PROJECT MANAGEMENT

BISBANO + ASSOCIATES, INC.
 188 VALLEY STREET | PROVIDENCE, RI | 02909
 VOICE 401.404.8310 FAX 401.404.8311 WWW.BISBANO.COM



2840-R-REM
 EXTERIOR ELEVATIONS &
 SCHEDULE

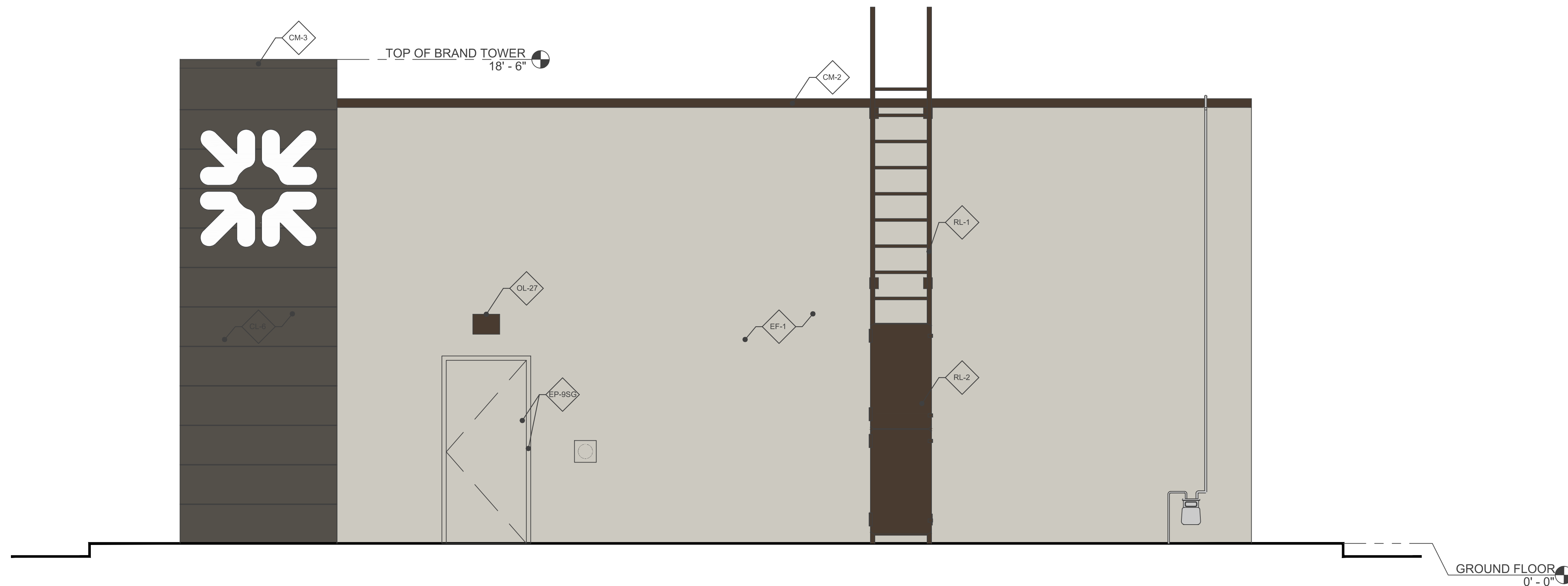
ISSUE TYPE:
 ISSUE DATE:
 DRAWN BY:

REVISED:

SCALE:
 AS NOTED

B+A PROJECT NO:
 20XX.XX

A10.02



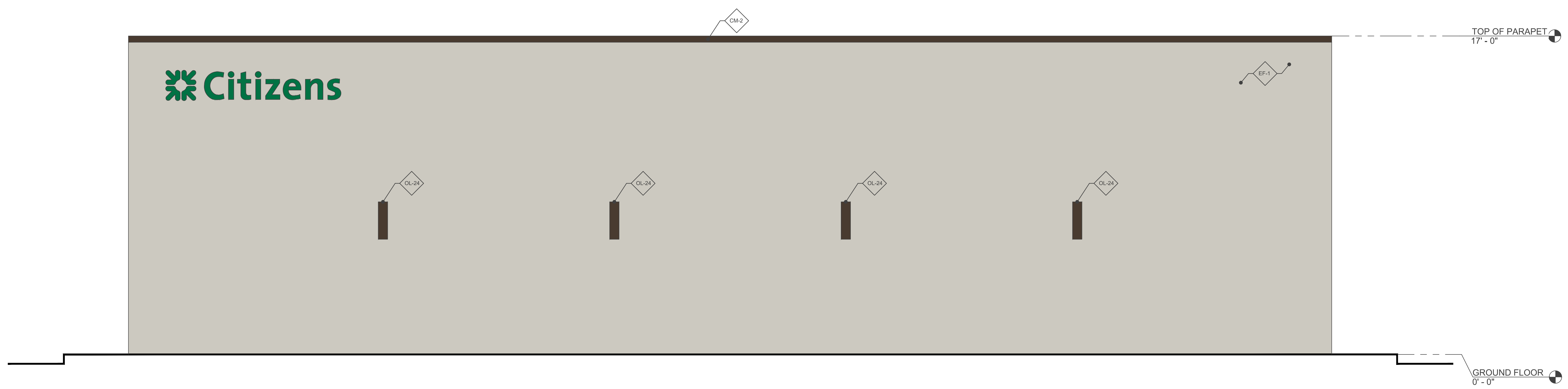
EXTERIOR SCHEDULE

CODE	DESCRIPTION	MANUFACTURER	MODEL NO./COLOR/FINISH	REMARKS
PAINT SUFFIX LEGEND: FL = FLAT, SG = SEMI-GLOSS, GL = GLOSS, LA = LAQUER, ST = WOLF GORDON, SCRUBTOUGH				
FINISHES				
EP-9	EXTERIOR PAINT	SHERWIN WILLIAMS	COLOR: REPOSE GRAY # SW 7015 FINISH: TBD BASED ON SITE CONDITIONS PRODUCT TYPE: BENJAMIN MOORE AURA EXTERIOR PAINT	LOCATION: EXTERIOR FACADE
EP-10	EXTERIOR PAINT	SHERWIN WILLIAMS	COLOR: URBANE BRONZE # SW 7048 FINISH: TBD BASED ON SITE CONDITIONS PRODUCT TYPE: BENJAMIN MOORE AURA EXTERIOR PAINT	LOCATION: EXTERIOR COPING
EF-1	STO	STO CORP	COLOR: SILVER LINING #21614-79 FINISH: LIMESTONE	LOCATION: EXTERIOR FACADE
CL-5	FIBER CEMENT 'WOOD' CLADDING	NICHIHA	SERIES: VINTAGEWOOD COLOR: CEDAR DIMENSION: 17.875"H X 71.5"L X 5/8" THICK	NOTE: PREFERRED OPTION LOCATION: EXTERIOR FACADE, PORTAL
CL-6	FIBER CEMENT CLADDING	NICHIHA	MODEL: TUFFBLOCK COLOR: STEEL DIMENSION: 17.875"H X 71.5"L X 5/8" THICK	NOTE: PREFERRED OPTION LOCATION: EXTERIOR FACADE, BRAND TOWER
CM-1	COPING METAL	PAC-CLAD	MODEL: PAC-TITE COPING COLOR LINE: CUSTOM COLOR TBD TO MATCH FIBER CEMENT PANELS FINISH: CUSTOM COLOR TBD TO MATCH FIBER CEMENT PANELS	LOCATION: THIS COPING FINISH TO BE UTILIZED AT ENTRANCE PORTAL ABOVE NICHIHA VINTAGEWOOD
CM-2	COPING METAL	PAC-CLAD	MODEL: PAC-TITE COPING COLOR LINE: STANDARD COLOR FINISH: MIDNIGHT BRONZE	LOCATION: THIS COPING FINISH TO BE UTILIZED AT ALL AREAS ABOVE STO EFIS SYSTEM
CM-3	COPING METAL	PAC-CLAD	MODEL: PAC-TITE COPING COLOR LINE: STANDARD COLOR FINISH: GRAPHITE	LOCATION: THIS COPING FINISH TO BE UTILIZED AT BRAND TOWER ABOVE NICHIHA TUFFBLOCK
BUILDING ACCESSORIES				
CA-1	ARCHITECTURAL CANOPIES	MAPES CANOPIES	LINE: CANTILEVER COLOR: IN-HOUSE COLOR, MPC GREEN, #MAMF-0578	FURNISHED AND INSTALLED BY GC LOCATION: MAIN ENTRANCE
CA-3	ARCHITECTURAL CANOPIES	MAPES CANOPIES	LINE: SUPERSHADE COLOR: IN-HOUSE COLOR, MPC GREEN, #MAMF-0578	FURNISHED AND INSTALLED BY GC LOCATION: MAIN ENTRANCE AND STOREFRONT LOCATIONS - REFER TO EXTERIOR ELEVATIONS
SITE EQUIPMENT				
RL-1	EXTERIOR ROOF ACCESS LADDER	ALACO LADDER	MODEL: 561 HANDRAILS OVER ROOF FINISH: ALUMINUM COLOR: POWDER COATED RAL 7021 9840-72122R BLACK GREY	USE MODIFIED HANDRAIL OPTION
RL-2	EXTERIOR ROOF ACCESS LADDER SECURITY GATE	ALACO LADDER	MODEL: H300 - 86" SECURITY DOOR FINISH: ALUMINUM (DOOR) & STAINLESS STEEL (HINGES) COLOR: POWDER COATED RAL 7021 9840-72122R BLACK GREY	HINGE LOCKS NOT PROVIDED

SECONDARY SIGNAGE

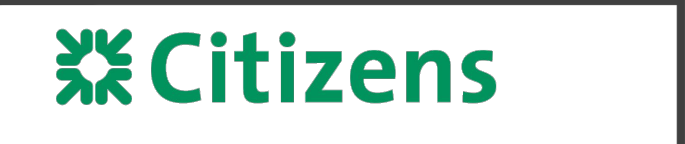
CODE	DESCRIPTION	MANUFACTURER	MODEL NO./COLOR/FINISH	REMARKS
RD-1-36	DIRECTIONAL SIGN	-	MODEL: RD-1-36 SIZE: 3'-0"H X 2'-2 3/8"W	-
RD-2-2	CANOPY REGULATORY SIGNS, CLEARANCE	-	MODEL: RD-2-2 SIZE: 8'H X 54"W	-
RD-2-3	CANOPY REGULATORY SIGNS, CLEARANCE	-	MODEL: RD-2-2 SIZE: 8'H X 54"W	-
DHR-2	DOOR HOURS DOUBLE DOORS	AGI	MODEL: DHR-2 SIZE: -	-

NOTE:
REFER TO FULL SCHEDULE FOR PROJECT SPECIFIC ITEMS. THIS SHEET IS SHOWN FOR REFERENCE ONLY.



ARCHITECTURE
INTERIOR ARCHITECTURE
SPACE PLANNING
FACILITIES MANAGEMENT
PROJECT MANAGEMENT

BISBANO + ASSOCIATES, INC.
RISING SUN MILLS | 188 VALLEY STREET | PROVIDENCE, RI | 02908
VOICE 401.404.8310 FAX 401.404.8311 WWW.BISBANO.COM



2840-R-REM
EXTERIOR ELEVATIONS &
SCHEDULE

ISSUE TYPE: -	REVISED: -
ISSUE DATE: 12/02/2025	
DRAWN BY: SA	

SCALE: AS NOTED
B+A PROJECT NO: 20XX.XX
A10.03